



# TOWER MOUNT

## BROADBAND MMDS TRANSMITTERS

- CLOSED LOOP ENVIRONMENTAL CONTROL (NEMA 4X RATING) FOR COMPLETE WEATHER PROOFING AGAINST SUN, UV, RAIN, TEMPERATURE, DUST, SAND, ETC.
- NO WAVEGUIDE NECESSARY
- REMOTE CONTROL PANEL FOR SYSTEM MONITORING
- COMPLETE BROADBAND PERFORMANCE
- EXPANDABLE TO 31 CHANNELS OR MORE
- ULTRA LINEAR DESIGN
- COMPATIBLE WITH ALL SCRAMBLING SYSTEMS
- SUPERIOR PICTURE QUALITY
- CHANNELS ADDED OR CHANGED AT OPERATOR'S DISCRETION



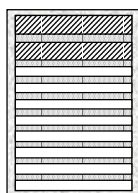
LSI-27T & CONTROL PANEL



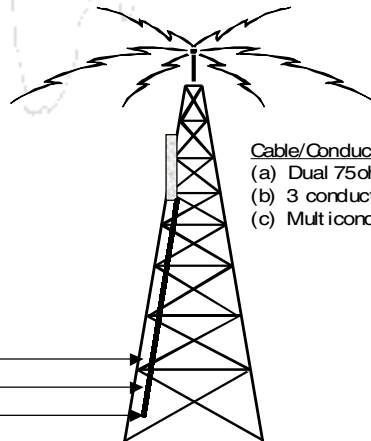
----- *THE TOWER MOUNT BROADBAND SYSTEM* OFFERS A FULL ENVIRONMENTAL CONTROL UNIT WITH UV AND WEATHER RESISTANT ENCLOSURES, CABLES AND CONNECTORS. NO WAVEGUIDE IS NECESSARY THEREFORE REDUCING TRANSMISSION LINE LOSSES. THE TRANSMITTER CONTROL PANEL MONITORS SYSTEM STATUS AND CONTROLS SYSTEM PERFORMANCE AT THE HEADEND. -----

Headend

Control Panel  
Modulators  
and  
Combiner



VHF coax (a)  
AC cable (b)  
DC Cable (c)



Cable/Conductors (75 Meters Typ.)  
(a) Dual 75ohm (VHF)  
(b) 3 conductor - 220 VAC  
(c) Multiconductor - control/monitor

<b>RF Performance</b>		<b>LSI-27T</b>
Output Power (1dB compression point)		100 Watts
Color Transmission		NTSC, PAL or SECAM Composite
Operating Frequency		2500-2700 MHz
Spurious Products		< -60 dBc
Signal to Noise		> 60 dB
Output Impedance		50 Ohm Type "N" Jack
<b>Baseband Video *</b>		
Input Type		Composite Video NTSC, PAL, SECAM
Input Level		1V Peak to Peak $\pm$ 6 dB
Input Impedance		75 Ohm
Frequency Response		$\pm$ 1 dB
Modulation Range		To 95% Modulation Depth
Differential Gain		3% Maximum
Differential Phase		2° Maximum
Low Frequency Linearity		3% Maximum
<b>Baseband Audio *</b>		
Input Type		600 Ohm Balanced
Input Level		-15 dBmV to +20 dBmV
Frequency Response		$\pm$ 1 dB, 75 $\mu$ sec. Preemphasis
Harmonic Distortion		1% Maximum
FM Hum and Noise		50 dB Minimum Below 25 KHz Deviation
<b>General &amp; Mechanical</b>		
Ambient Temperature		**
Operating Temperature		**
Relative Humidity		100% Maximum, Condensing
Altitude		to 8000 Feet
Power Requirements		NTSC: 120 VAC $\pm$ 15%, 60 Hz PAL: 220 VAC $\pm$ 15% , 50 Hz
Mounting Bracket		**
Lightning Suppression		**

\* With Modulator Supplied By Loma Scientific International

\*\* Consult factory for options