



### MMDS /ITFS DIPLEXERS

*These lightweight, aluminum, all welded diplexers are extremely rugged, have long life and are easy to handle and mount. Finish is gold irridite, for corrosion resistance. We welcome your inquiry for special modifications or for entirely different types.*

#### LSI MODEL 760 MMDS VISUAL / AURAL DIPLEXER



Type 760 inserts the transmitter aural RF carrier into the visual transmission pass band making the composite output available to the antenna line or channel combiner.

Aural loss is  $<1.5\text{dB}$

Visual and color loss is  $<0.1\text{dB}$  and  $<1.0\text{dB}$ , respectively.

Return loss and visual/aural isolation are both  $>14\text{dB}$

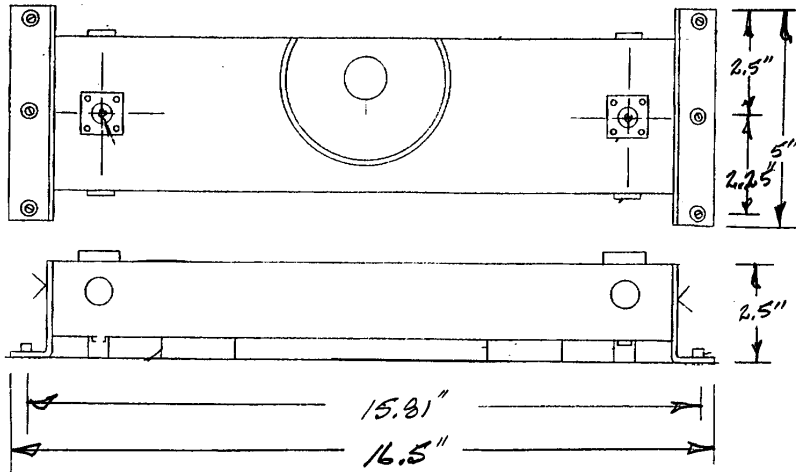
Ambient operating temperature:

Aluminum model 760 - (CH#) is 17 to 27 deg. C

Connectors: N Female (quantity 3) 50 Ohms

Width and height: 7.5 inches x 11 inches, respectively.

Mounting details:



*Specifications are subject to change without notice.*